



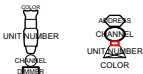


SMDCAC Key:

Fixtures:

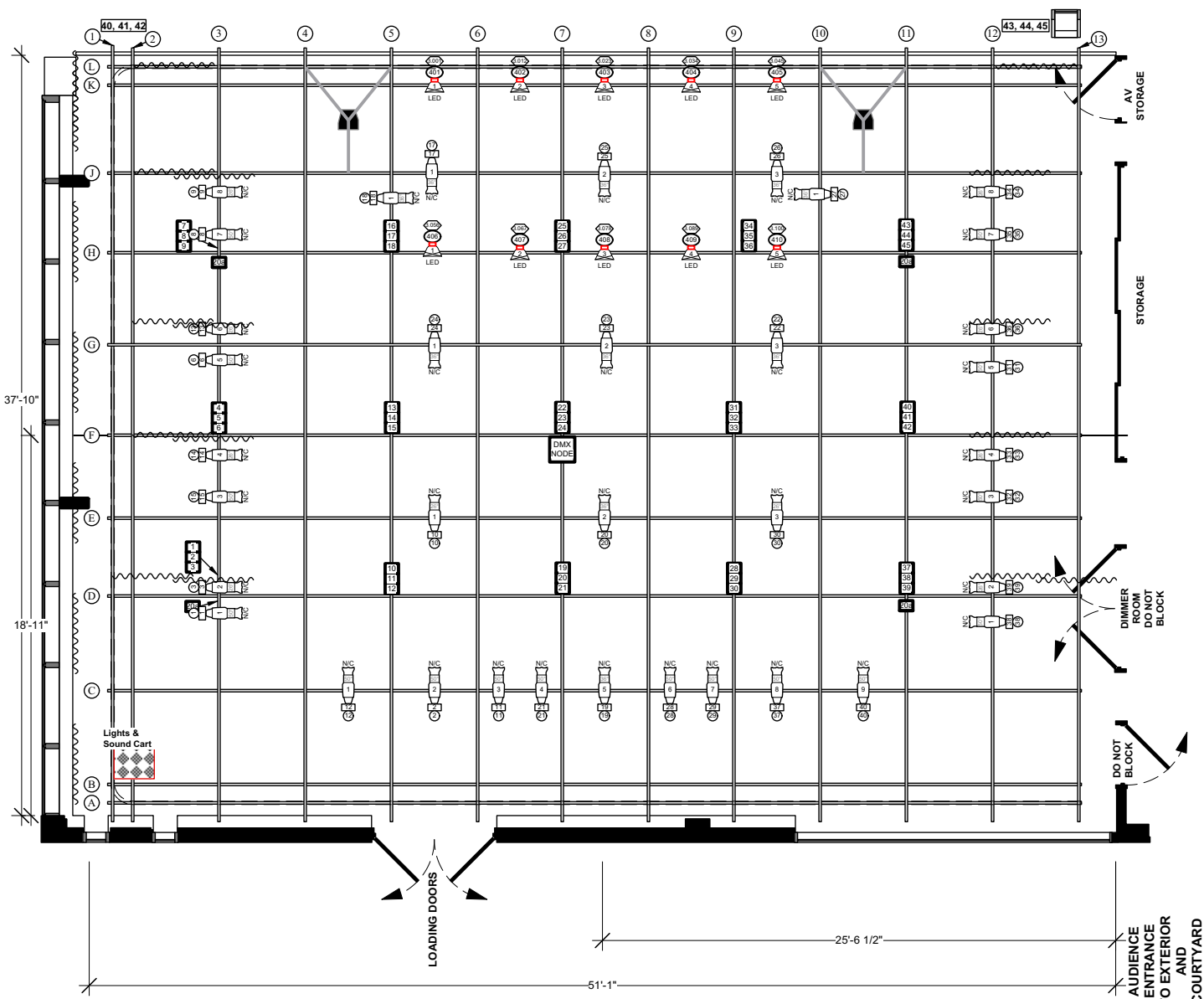
-  ETC Source4 26°
-  ETC Source4 36°
-  ETC Source4 50°
-  Chauvet COLORado 1 Tour (11ch. Mode)

Typicals:



Notes:

- + Conventional Fixture Patch is 1-1.
- + Fixture Placement approximated.
- + Power Placement approximated.
- + LED power is always hot.
- + House Lights: Dims. 46 thru 48.
- + In the labeling of hanging positions, "I" has been skipped for clarity's sake.



SHEET NO.: **1** OF **1**

DATE UPDATED: **02-23-2023**

DESIGNER: **Uncredited**

PRODUCTION: **SMDCAC**

Subject: **Lab Theater Light Plot 2023**

SCALE: **1/8" = 1'-0"**

ARCH. DRAFTING: **R. F. WOLIN**

LX DRAFTING: **R. Barca**

Space left intentionally blank

CONTACT FOR RENTALS

South Miami-Dade Cultural Arts Center
10950 SW 211 Street
Cutler Bay, Florida 33189

rentals@smdcac.org
phone: 786-573-5316
fax: 786-573-5330