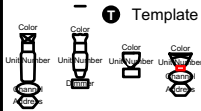


DCMCAC Key:

Fixtures:

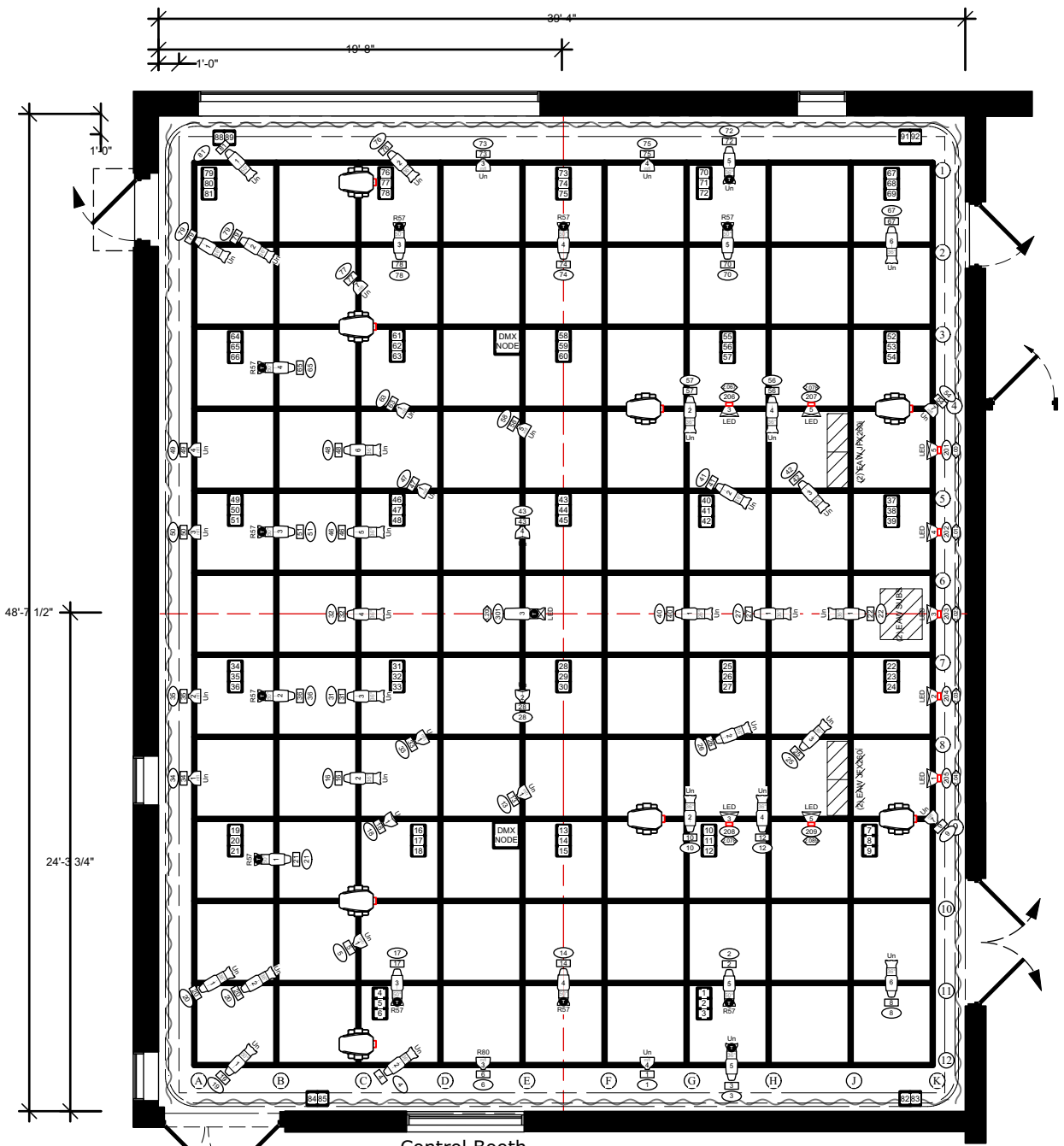
- 1 ETC Source4 19° LED @ 129w (Series 1)
- 1 ETC Source4 26° @ 750w
- 27 ETC Source4 36° @ 750w
- 12 ETC Source4 50° @ 750w
- 14 ETC Source4 Par (MFL) @ 750w
- 6 ETC Source4 Par (WFL) @ 750w
- 8 Chauvet COLORado 1 Tour (11ch. Mode)
- 9 ETC High End Systems LoneStar

Typicals:



Notes:

- + Conventional Fixture Patch is 1-1.
- + Fixture Placement approximated.
- + Power Placement approximated.
- + Templates paired with R57 are "Clouds" of unknown brand and reference number.
- + Template in U#3, Position E is the SMDCAC Logo.
- + Other templates are of unknown brand and reference number.
- + "Un" = Unknown
- + Lighting Grid consists of 4'0" x 4'0" squares.
- + Channel 6 (Pipe 12 U#3) is used as a run light, and is not intended for designer use.
- + LED power is controlled by marked breakers, located in the IT room next to the lighting and sound Booth.



CONTACT FOR RENTALS

South Miami-Dade Cultural Arts Center
10950 SW 211 Street
Cutler Bay, Florida 33189

rentals@smdcac.org

phone: 786-573-5316
fax: 786-573-5330

SUBJECT:	Lighting Plot
SCALE:	1/8" = 1'-0"
ARCH. DRAFTING:	R. F. WOLIN
LX DRAFTING:	R. BARCA

PRODUCTION:	DCMCAC
Black Box Light Plot 2023	
DESIGNER:	Uncredited
DATE UPDATED:	02-03-2023

SHEET NUMBER:	1
OF	1