

SMDCAC Key:

Fixtures:

- 24 D60 Lustr+ (RGB +7 Mode) @ 161w
- 14 ETC S4WRD Color
- 10 ETC Source4 10" @ 750w
- 10 ETC Source4 14" @ 750w
- 9 ETC Source4 19" @ 750w
- 1 ETC Source4 19" LED (6 ch. Mode) @ 129w
- 51 ETC Source4 26" @ 750w
- 0 ETC Source4 26" @ 575w
- 78 ETC Source4 36" @ 750w
- 14 ETC Source4 Zoom 15°-30° @ 750w
- 10 ETC Source4 Zoom 25°-50° @ 750w
- 8 ETC Source4 PAR EA (WFL) @ 750w
- 60 ETC Source4 PAR EA (MFL) @ 750w
- 7 Altman 4 Cell Sky Cyc @ 1kw (per cell)
- 12 Robin DLS Profile (47ch. Mode) @ 550w
- 35 ETC Source4 Par MCM (MFL) @ 575w
- 5 ETC S4 S3 LED 10" 12ch. Mode
- 5 ETC S4 S3 LED 14" 12ch. Mode

Other:

- INDICATES AN AREA THAT MAY NOT BE OBSTRUCTED
- INDICATES A BOOM POSITION
- 400 Amp Company Switch 120/280 VAC 3PH 4W 60HZ
- 100 Amp Company Switch 120/280 VAC 3PH 4W 60HZ

Typicals:

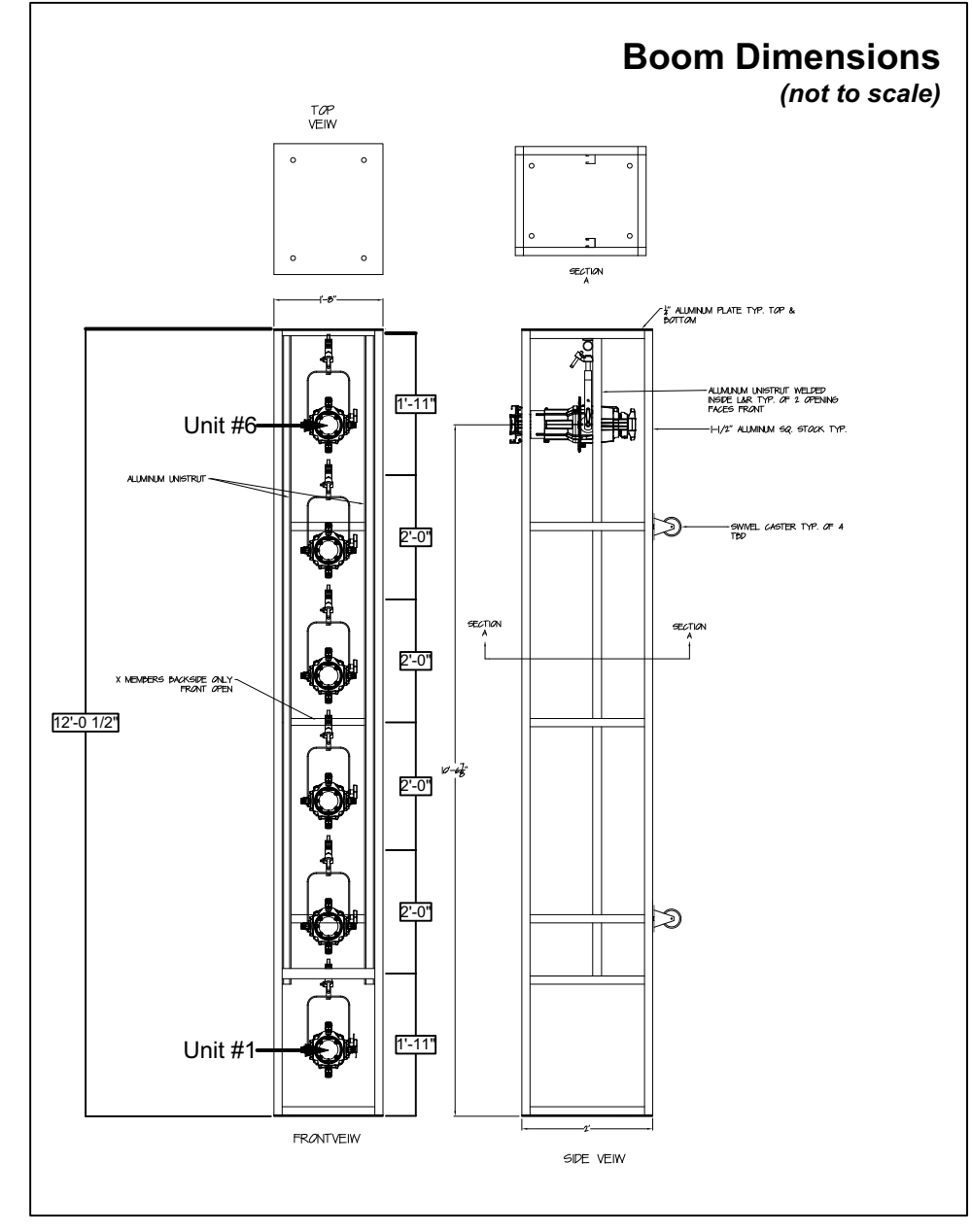
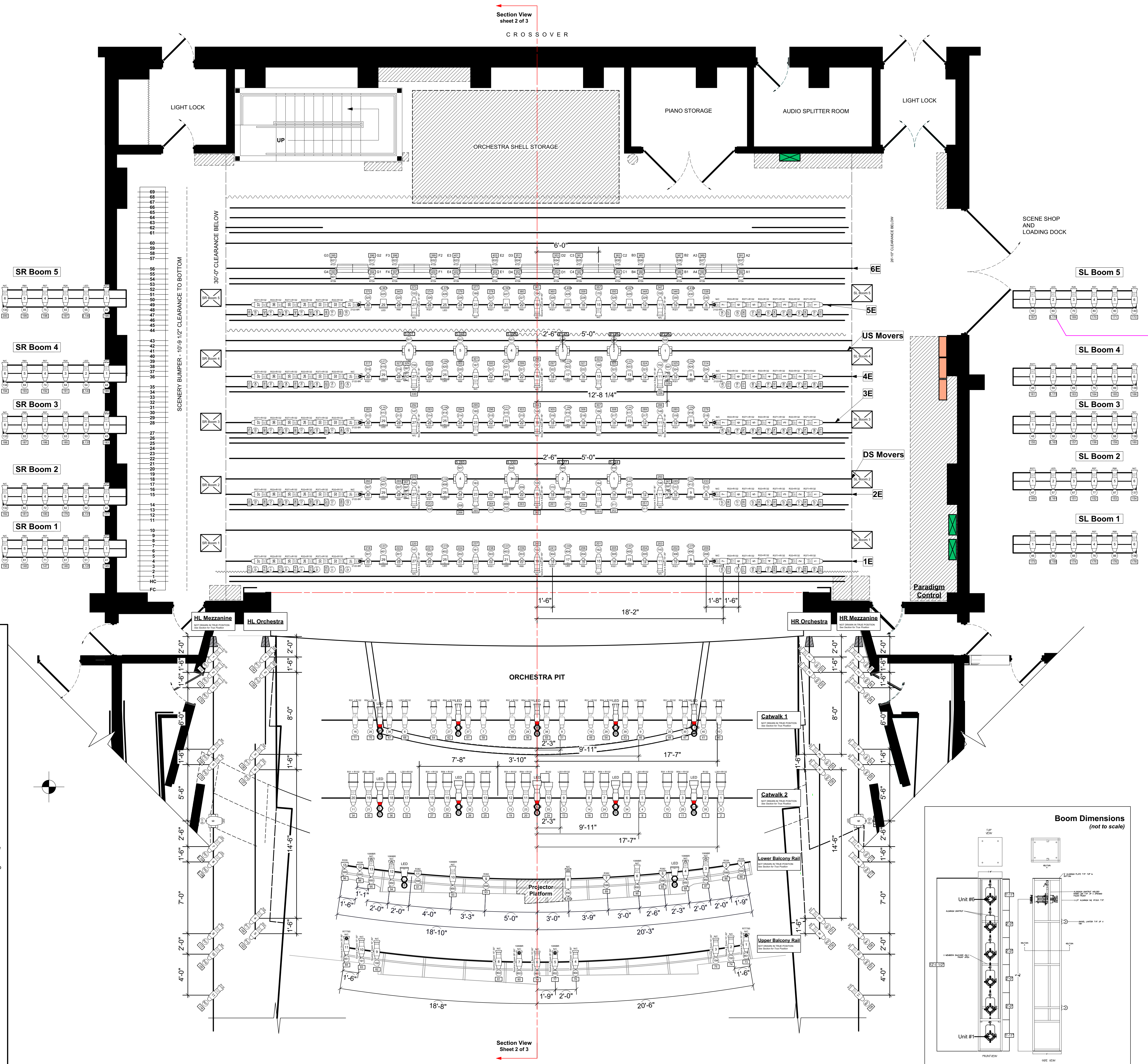
- STEEL TEMPLATE
- GLASS TEMPLATE
- TOP HATS

Notes:

- + There is **NO** House Focus.
- + Instruments are **NOT** Bench Focused.
- + Instruments are on 0'18" centers except where otherwise specified.
- + Altman Q-Lites are Overstage worklights and are not intended for designer use.
- + Boom Placement is approximated.
- + Linesets are on 0'-6" centers except where otherwise specified.
- + See section for more information regarding hanging positions not drafted at true position on this drawing.
- + All ETC D60 Lustr+ fixtures are hung with 45° external diffusers.
- + HL Mezzanine hanging position exists directly above the HL Orchestra Box Boom.
- + HR Mezzanine hanging position exists directly above the HR Orchestra Box Boom.
- + Color and Frost in Fixtures 1 thru 6 and 32 thru 37 on 1LX thru 5LX (Ch. 101 thru 120) are framed separately.
- + Plot and associated paperwork are subject to change.

This space is left intentionally blank

69	Traveler Track Storage
68	RP Screen
67	RP Screen
65	Cyclorama
63	Leg
62	Border
61	Empty Space - To allow shell to fly
60	Shell Ceiling #4
59	Empty Space - No Hang Pipe
58	6 Electric - Cyc Lights
56	Black Scrim
55	Border
54	5 Electric
53	Empty Space - To allow shell to fly
52	Shell Ceiling #3
51	Leg
49	Border
48	Black Traveler w/ legs
47	Empty Space - To allow shell to fly
46	Shell Ceiling #2
45	US Moving Lights
44	Empty Space - No Hang Pipe
43	4 Electric - Cyc Lights
42	Border
41	Empty Space - To allow shell to fly
40	Shell Ceiling #1
39	Leg
38	Border
37	RP Seasonal
36	Full Stage Black
35	Empty Space - No Hang Pipe
34	3 Electric
33	Empty Space - To allow shell to fly
32	Shell Ceiling #2
31	Leg
30	Border
29	RP Seasonal
28	Full Stage Black
27	Empty Space - No Hang Pipe
26	3 Electric
25	Empty Space - To allow shell to fly
24	Shell Ceiling #1
23	Leg
22	Border
21	RP Seasonal
20	Full Stage Black
19	DS Moving Lights
18	Empty Space - No Hang Pipe
17	3 Electric
16	Empty Space - To allow shell to fly
15	Shell Ceiling #1
14	Leg
13	Border
12	RP Seasonal
11	Full Stage Black
10	Empty Space - To allow shell to fly
9	Shell Ceiling #1
8	Leg
7	Border
6	RP Seasonal
5	Full Stage Black
4	DS Moving Lights
3	Empty Space - No Hang Pipe
2	3 Electric
1	Empty Space - To allow shell to fly
HC	Hard Portal Legs
HC	Hard Portal Border
HC	House Curtain
FC	Fire Curtain



SHEET NUMBER:	1	OF	3
	DATE UPDATED:		07-15-2023
DCMCAC		Uncredited	
PRODUCTION:			
Lighting Plot			
SCALE: 1/4" = 1'-0"			
ARCH. DRAFTING: R. F. WOLIN			
HEAD UX: R. BARCA			
PRODUCTION MANAGER:			
CONTACT FOR RENTALS			
Dennis C. Moss Cultural Arts Center 10950 SW 211 Street Cuttler Bay, Florida 33189 mosscenterrentals@miamidadade.gov phone: 786-573-5316 fax: 786-573-5330			